

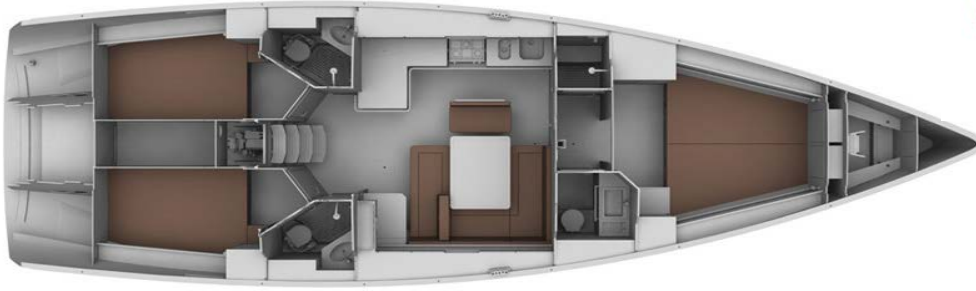
# Bavaria Cruiser 45 2013

Model / Fabrikat  
Yıl / Year / Jahr



[www.sailinmarmaris.eu](http://www.sailinmarmaris.eu)

+90 532 615 55 27



## Teknik Özellikler:

Tam Boy	14.27 m
En	4.35 m
Su Çekimi	2.10 m
Ağırlık (boş)	12.6 ton
Su	360 lt
Mazot	210 lt
Yelken Alanı	107 m <sup>2</sup>
Sarma Ana Yelken	
Sarma Cenova	
Motor	Volvo 75 hp
Kamara	3 + Salon
Yatak	6 + 1
WC / Banyo	3

İpeksi mat gri gövde rengi  
2 Dömen simidi  
Baş manevra pervanesi  
Tik havuzluk  
1 x Elektrikli marin tuvalet (Ön)  
Kalorifer, mazotlu  
150 W Inverter (12V DC - 220V AC)  
Elektrikli buzdolabı  
Radyo, CD, USB, AUX girişi  
Garmin GpsMap4008 haritalı GPS, dümende  
2 x Garmin GMI10 göstergesi  
(Hız, Derinlik, Rüzgar)  
Garmin GHC10 otopilot arayüzü  
Garmin GHS10i VHF Telsiz  
Ultra çapa, 27 kg  
Ultra fırdöndü, bosa kancası  
70 m x 10 mm zincir  
Quick 1000 W ırgat  
2.40 m. yumuşak tabanlı şişme bot  
Mercury 3.5hp, 4 zamanlı motor

Bimini güneşlik  
Serpinti körüğü  
Havuzluk minderleri  
Yüzme platformu ve duş  
Pasarella  
Can Salı (8 kişilik)  
8 x Otomatik şişme can yeleği  
1 x Çocuk can yeleği  
Barometre, Termometre  
Kılavuz kitaplar  
Elektronik ve kağıt haritalar  
220 V şarj sistemi  
Sıcak su

## Technical Data:

Overall Length	14.27 m
Beam	4.35 m
Draft	2.10 m
Displacement	12.6 tons
Water	360 lt
Fuel	210 lt
Sail Area	107 m <sup>2</sup>
Furling mainsail	
Furling genoa	
Engine	Volvo 75 hp
Cabins	3 + Saloon
Berths	6 + 1
Heads / Showers	3

Silk grey hull color  
2 Steering wheels  
Bow thruster  
Teak cockpit  
1 x Electrical marine toilet (Front)  
Warm air heating, diesel  
150 W Inverter (12V DC - 220V AC)  
Electric fridge  
Radio, CD, USB, AUX input  
Garmin GpsMap4008 chartplotter, at the cockpit  
2 x Garmin GMI10 displays  
(Speed, Depth, Wind)  
Garmin GHC10 autopilot interface  
Garmin GHS10i VHF Radio  
Ultra anchor, 27 kg  
Ultra flip swivel, chain grab  
70 m x 10 mm chain  
Quick 1000 W windlass  
2.40 m. soft bottom dinghy  
Mercury 3.5hp, 4 stroke outboard

Biminitop  
Sprayhood  
Cockpit cushions  
Swimming platform with shower  
Gangway  
Life raft (8 person)  
8 x Automatic inflatable life jackets  
1 x Child life jacket  
Barometer, Thermometer  
Pilot books  
Electronic and paper charts  
220 V recharging system  
Hot water

## Technische Daten:

Länge über alles	14.27 m
Breite	4.35 m
Tiefgang	2.10 m
Verdrängung	12.6 tonnen
Wassertank	360 L
Dieseltank	210 L
Segelfläche	107 m <sup>2</sup>
Grosssegel-Rollreffanlage	
Genua-Rollreffanlage	
Motor	Volvo 75 PS
Kabinen	3 + Saloon
Kojen	6 + 1
WC und Dusche	3

Graue (seidenmatt) Rumpffarbe  
2 Steuerrad  
Bugstrahlruder  
Teak Cockpit  
1 x Elektrische Marine-WC (Front)  
Warmluftheizung, diesel  
150 W Wechselrichter  
elektr. Kuehlaggregat  
Radio, CD, USB, AUX-Eingang  
Garmin GpsMap4008 Kartenplotter, im Cockpit  
2 x Garmin GMI10 Anzeige  
(Geschwindigkeit, Tiefe, Wind)  
Garmin GHC10 Autopilot Interface  
Garmin GHS10i VHF Radio  
Ultra-Anker, 27 kg  
Ultra-Schwenker, Kettenhaken  
70 m x 10 mm Kette  
Quick 1000 W Ankerwinde  
2.40 m. weichen Boden Beiboot  
Mercury 3.5PS, 4-Takt-Außenbord

Biminitop  
Sprayhood  
Cockpitkissen  
Badeplattform mit Dusche  
Gangway  
Rettungsinsel (8 Person)  
8 x Auto. aufblasbare Schwimmweste  
1 x Kinder-Schwimmweste  
Barometer, Thermometer  
Pilot Bücher  
Elektronische und Papierkarten  
Batterieladegerät  
Warmwasser